



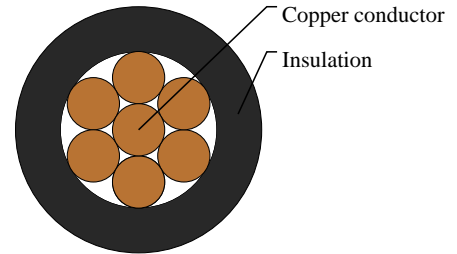
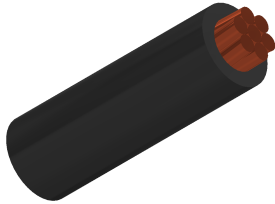
Caledonian

Automotive Cables

www.caledonian-cables.com

marketing@caledonian-cables.com

CIVUS 1C0.35



APPLICATIONS

This PVC insulated single-core cable is used in low voltage circuits in automobiles

STANDARDS

JASO D611

CABLE CONSTRUCTION

Conductor: Annealed stranded copper or copper alloy

Insulation: Polyvinyl Chloride(PVC)

Standard Compliance: JASO D611

PHYSICAL AND THERMAL PROPERTIES

Operating temperature: -40 °C to +85°C

DIMENSION AND PARAMETERS

No. of Cores × Cross-sectional Area	No. and Dia. of Wires	Diameter of Conductor (max.)	Nominal Insulation Thickness	Overall Diameter (min.)	Overall Diameter (max.)	Approx. Weight	Electrical Resistance at 20°C (max.)
No. ×mm ²	no./mm	mm	mm	mm	mm	kg/km	MΩ/m
1x0.35	7/SB	0.7	0.2	1.1	1.2	3.9	54.4